



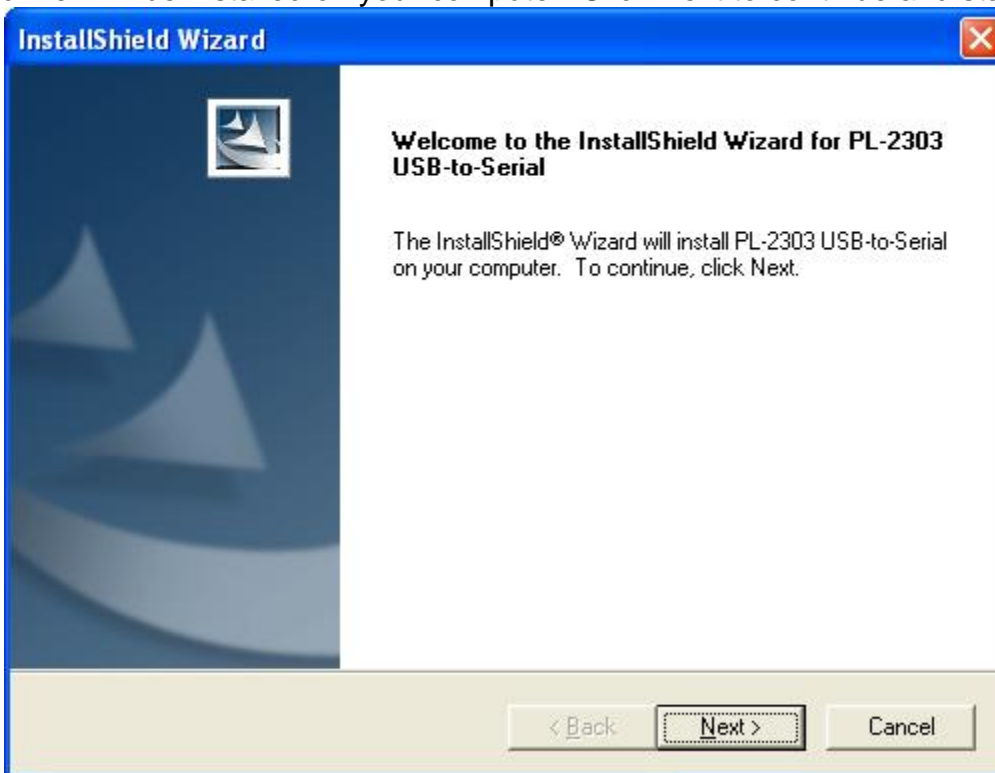
Installing USB Driver

This section will guide you on how to install the PL-2303 USB driver under Windows.

Note: Please take notice of the installation order. First, run the Setup wizard, and then plug in the USB device.

The following steps will show how to install the device under Windows.

1. Run driver setup program from the folder as per your operating system
For Windows XP run setup from **Win-XP** folder
For Windows Vista run setup from **Win-Vista** folder
For Windows 7 run setup file from **Win-7** folder
2. The InstallShield Wizard will be displayed on your screen to inform you that the PL-2303 driver will be installed on your computer. Click Next to continue and start the installation.



3. The End User License Agreement (EULA) window will be shown, click Yes to accept the terms of the agreement and continue.



4. Wait until the InstallShield Wizard informs you that driver installation is successfully installed. Click the Finish button to close the InstallShield program.

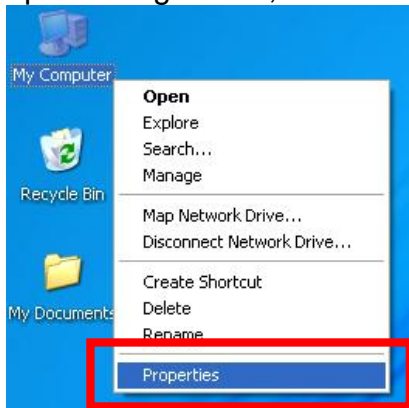


If you have plugged the cable into the PC while running the setup installation, please unplug and re-plug the cable for the system to detect the device. USB driver setup is now complete.

Checking Installed Virtual COM Port

Plug-in the USB device into USB port and do following steps to check installed COM port.

1. My Computer > right click, Click on Properties.



2. Click on Device Manager button in Hardware tab.



3. Expand Ports to see the installed virtual serial port.



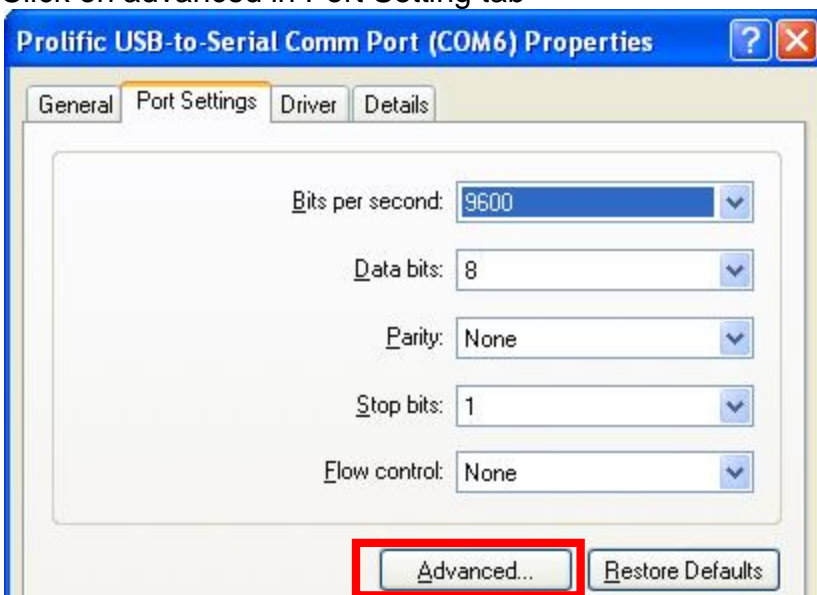
Changing COM port assigned number

Systems automatically assigns a COM port number when you plug-in device. In case you wish to change the assigned number, you can follow below steps.

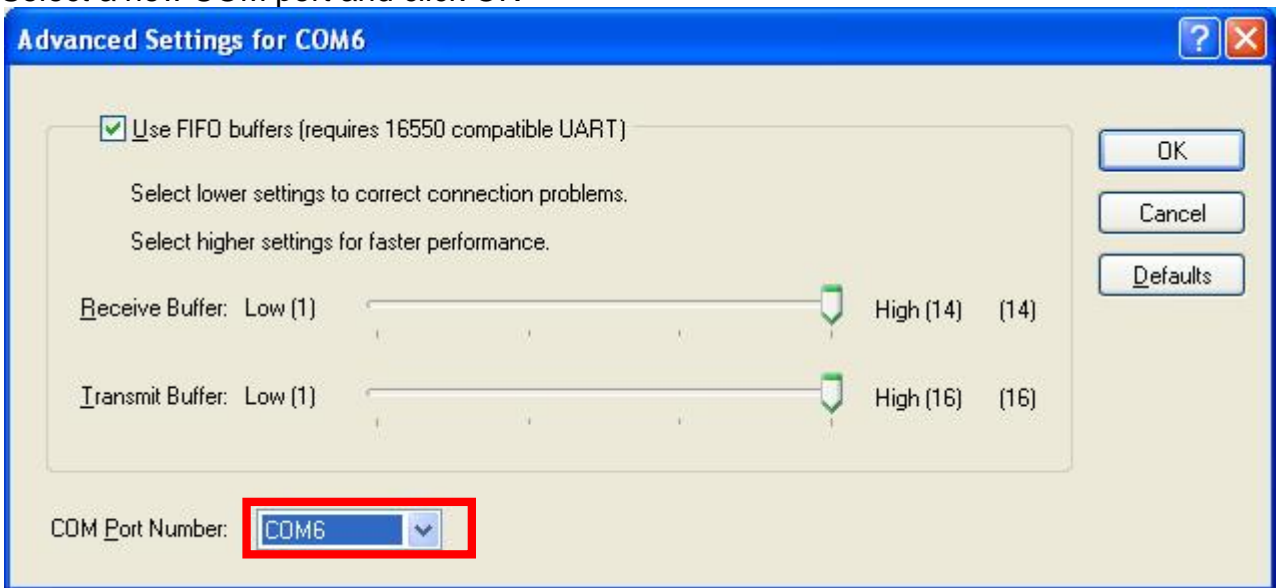
1. Right click on installed port and click properties



2. Click on advanced in Port Setting tab



3. Select a new COM port and click OK



Un-Installing USB Driver

Two methods for removing driver

1st Method

Control Panel > Add or Remove Programs > PL-2303 USB-to-Serial

2nd Method

Run driver installer setup, it will ask to reinstall or remove the driver